

# **The Community Schools Approach:**

**Why, What, and How to Boost ABCs**

**@characterstrong**

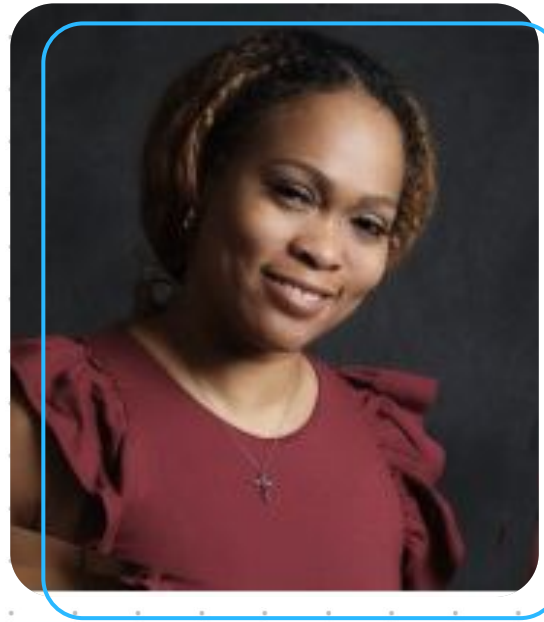


# The Community Schools Approach



**Dr. Alisha Hill**

Exec. Director of  
Professional Services  
CharacterStrong



**Lisa Rochford**

Capacity Builder &  
Transformative  
Space Curator



**Sarah Mathew**

Director of National  
Partnerships  
CharacterStrong

# Objectives

A yellow squiggle graphic located below the title "Objectives".

Define community schools



Explore 4 key pillars



Connect CharacterStrong SEL to pillars



Discuss system-level infrastructure



Share practical strategies & resources



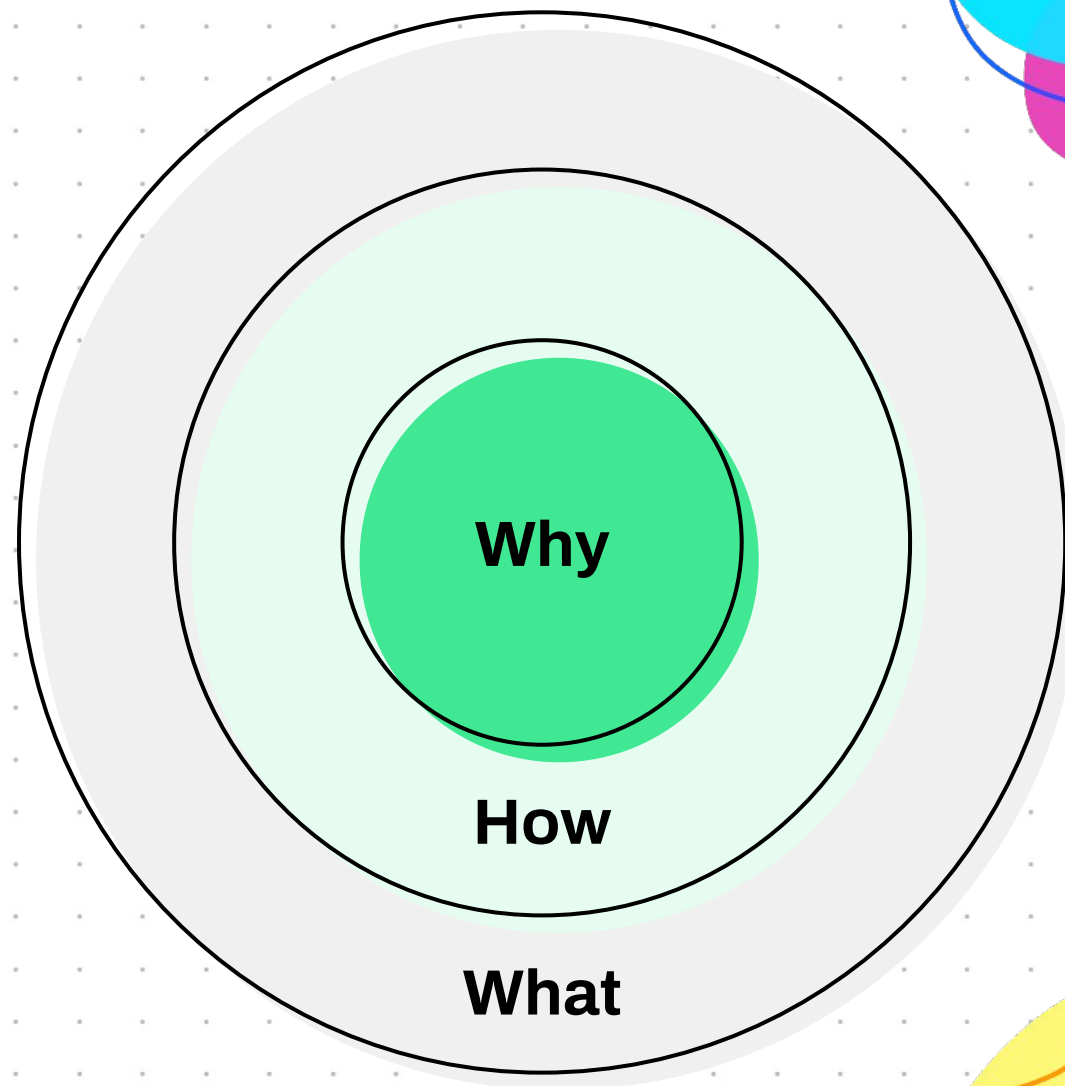
**Why** Community School



**What** are Community Schools



**How** to utilize the 4 Pillars of  
Community Schools





## **Turn & Talk:**

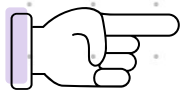
What ONE word  
comes to mind when  
you hear Community  
School?

**Why**

Community  
Schools



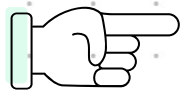
# Why Community Schools? Why Now?



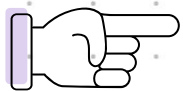
**1 in 5 students** faces unmet mental health needs



Educators report **high levels** of burnout and isolation



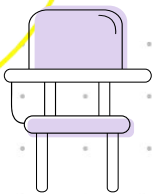
**Fragmented services** = inconsistent support



Families want to feel like **true partners**



# Why Community Schools Work



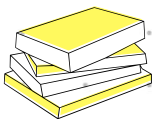
## Improved Attendance:

Chronic absenteeism **dropped from 45% to 32%** after supports like transportation and health access were added.



## Higher Graduation Rates:

Some community schools report on-time **graduation rates over 90%.**



## Better Academic Performance:

Extended learning, mentoring, and tutoring **boost outcomes in math and reading.**



## Stronger Community Engagement:

Families, educators, and partners feel a stronger **sense of belonging and shared purpose.**



## Why Community Schools

- Improved Attendance
- Higher Graduation Rates
- Better Academic Performance
- Stronger Community Engagement
- Stronger school climate



**Turn & Talk:**  
Which of these  
outcomes would  
make the biggest  
difference in your  
setting?

# Why Community Schools?

**Community Schools** address  
root causes, not just symptoms.

A yellow brushstroke graphic consisting of two parallel, slightly wavy lines is located below the text "not just symptoms.".

**What**

are Community  
Schools?





# Community Schools



A community school is any school serving pre-Kindergarten through high school students using a “**whole-child**” approach, with the school as a “**hub of opportunity and access**” for students, families, and the surrounding community. It integrates academics, health and social services, after school and summer programming, and family engagement under one roof.



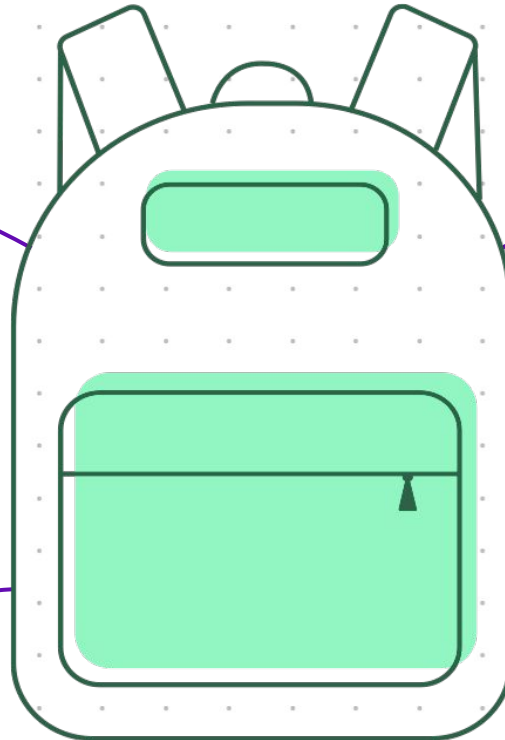
# Whole Child

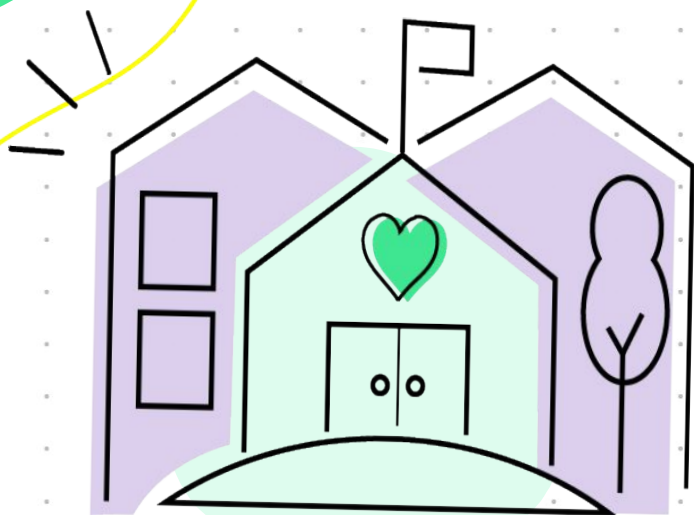
**Academic Needs**  
(Core skills,  
Content Knowledge,  
Career/College Readiness)

**Social-Emotional Needs**  
(Competencies, Belonging,  
Mental Health)

**Basic Needs**  
(Nutrition, Sleep,  
Physical Health)

**Behavioral Needs**  
(Attendance,  
Expectations,  
Engagement)





**Community  
Schools**

# School & Community Partnership

Public **schools** that partner closely with **families** and **community** organizations to serve the whole child.

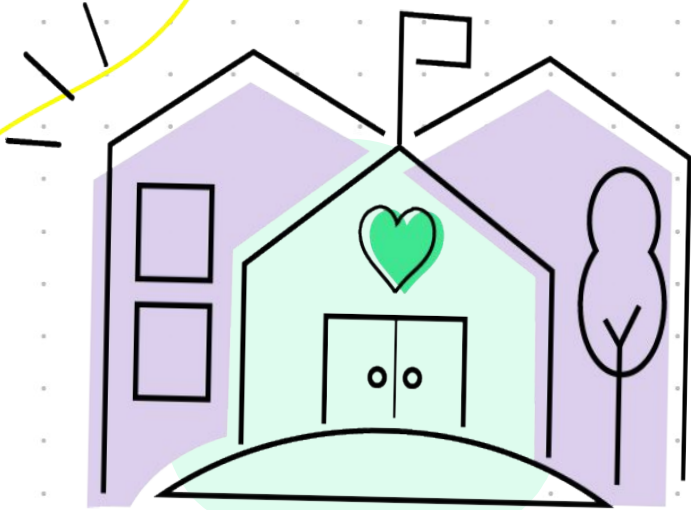


**Community  
Schools**

# Hub of Opportunity

Community Schools provide not just education, but a broad range of academic and life supports and resources —removing barriers that often block student success.





## **Community Schools**

# **Access for All Students**

Through integrated student supports, enriched learning time, active family engagement, and collaborative leadership, community schools connect students and families to the tools they need to thrive.

**Implementation is the Missing Link**

**Understanding the Pillars**

**≠**

**Implementing Them**





# Community Schools

## 4 Pillars

### **Collaborative Leadership**

School leaders, community leaders, and families collaborate as a team with shared decision-making

### **Integrated Supports**

Mental, physical health, and social services integrated with academics to support student success.

### **Expanded Learning Time**

After-school, weekend, and summer programs provide academic and social, emotional, and behavioral support.

### **Active Family & Community Engagement**

Strong partnerships between families, schools, and community organizations to build trust.



# Community Schools: 4 Pillars

**Which of these is strongest at your school?**

**1**

## **Collaborative Leadership**

Bringing all stakeholders to the table and actively involved?

**2**

## **Integrated Supports**

Bridging the gap between school and community resources and making it easily accessible?

**3**

## **Expanded Learning Time**

Removing logistical barriers like transportation and scheduling issues?

**4**

## **Active Family & Community Engagement**

Building strong consistent partnerships that provide resources for wraparound support?



# Community Schools: 4 Pillars

**Which needs the most support at your school?**

**1**

## **Collaborative Leadership**

Bringing all stakeholders to the table and actively involved?

**2**

## **Integrated Supports**

Bridging the gap between school and community resources and making it easily accessible?

**3**

## **Expanded Learning Time**

Removing logistical barriers like transportation and scheduling issues?

**4**

## **Active Family & Community Engagement**

Building strong consistent partnerships that provide resources for wraparound support?

# How

the Community  
Schools Pillars  
Work?



# Lisa N. Rochford

 Capacity Builder



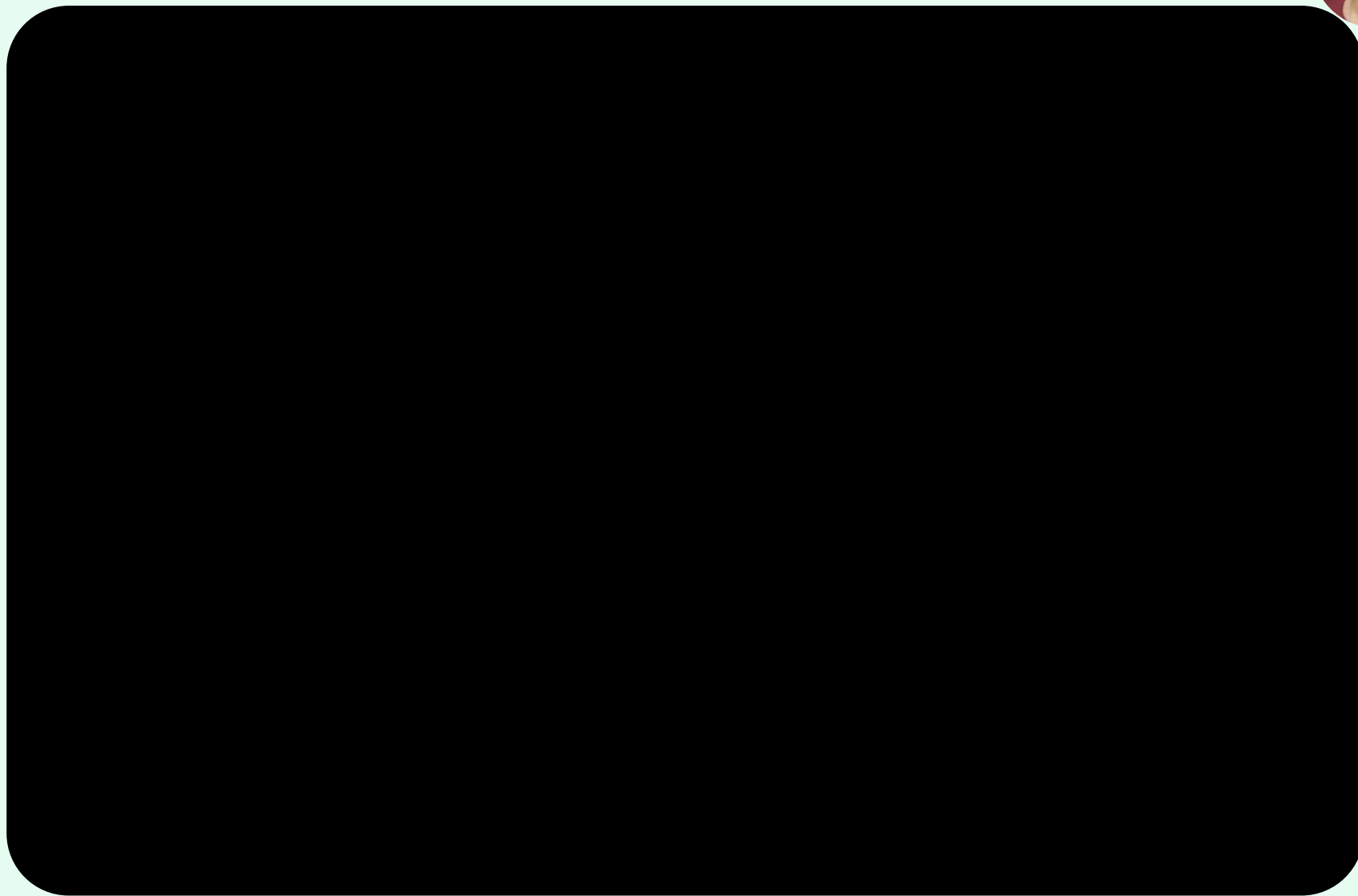
## New York City Public Schools

- # of students
- # of campuses
- Focus
- Partnership with CharacterStrong





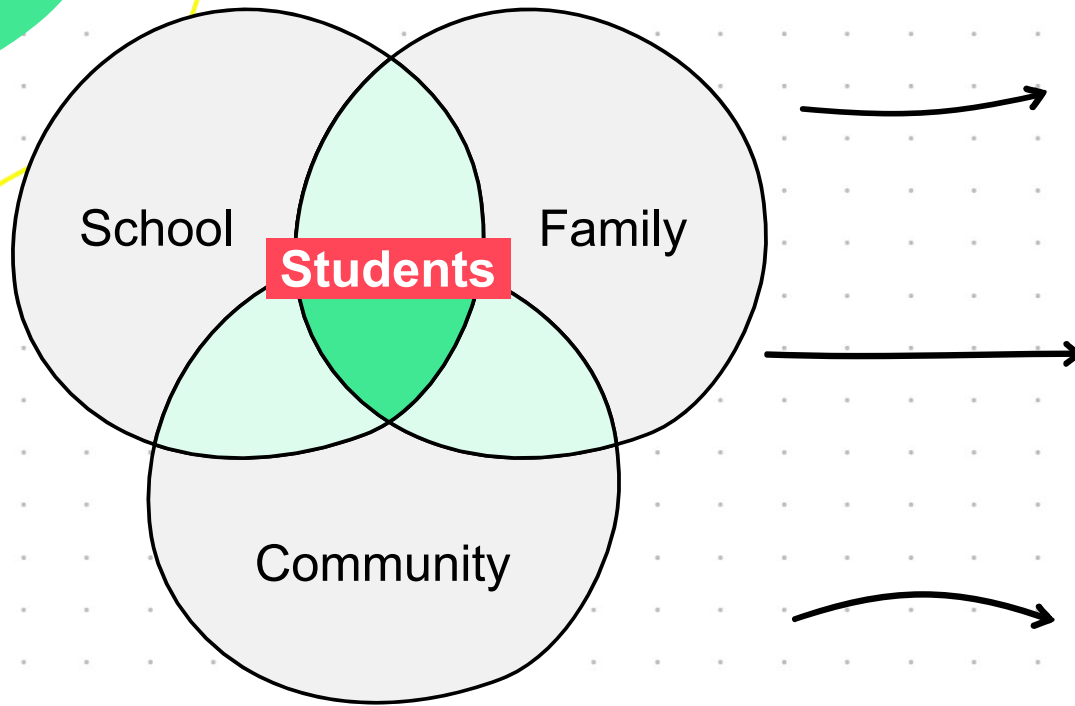
# NYC Community Schools Approach



**How**

Collaborative  
Leadership





# Collaborative School Leadership

School leaders, community leaders, and families collaborate as a team with shared decision-making.

**Shared Ownership  
Drives Change**

# NYC Community Schools Approach



# Shared Ownership Drives Change

“If they’re **impacted,**  
they should be **involved.**”

A yellow brushstroke, consisting of several parallel, slightly curved lines, is located below the quote.

# Pillar To Practice



## Pillar 1: Collaborative Leadership and Practices

- Share decision-making with staff, students, families, and partners
- Create cross-role leadership teams and shared planning structures
- Use protocols that surface diverse perspectives and shared goals
- Dedicate time for regular reflection and co-learning
- Build systems of accountability *with*, not just *for*, stakeholders

**What leadership practices can best support your community school success?**

## **Turn & Talk:**

Who is at the table  
when your school  
makes decisions?

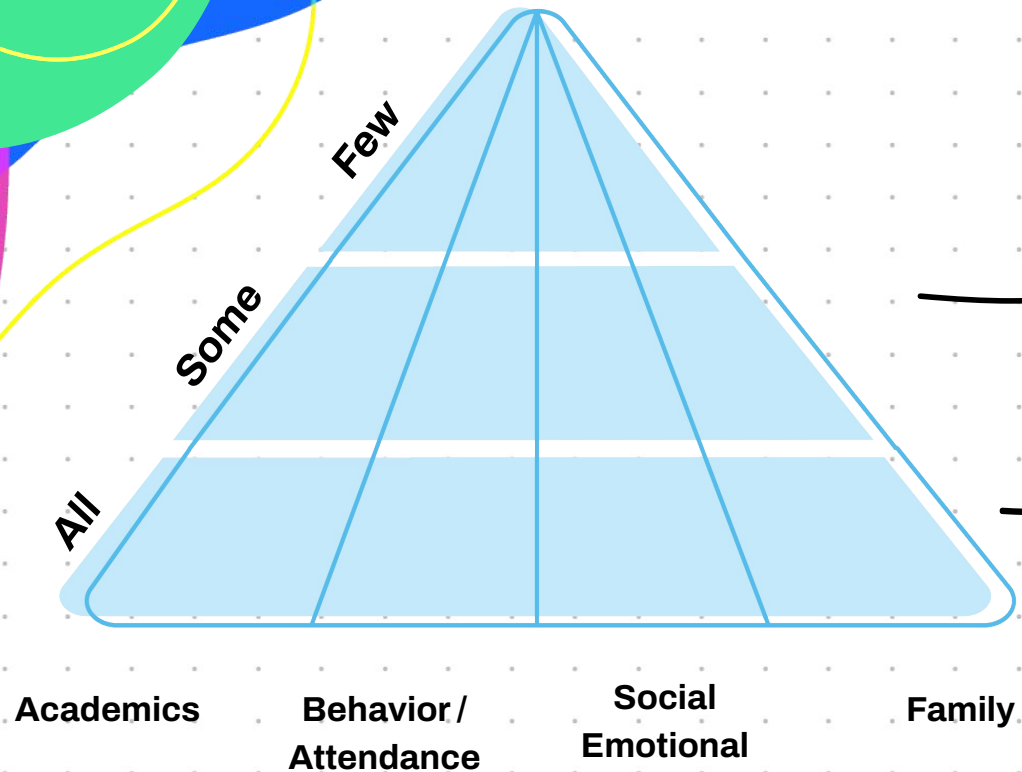
## **Turn & Talk:**

What leadership  
practices can best  
support your  
community school  
success?



# How

Integrated  
Supports



**Foundational Support to Meet Basic Needs**

Medical/Physical Health, Housing, Food Security

**From Data to Daily Support**

# Integrated Supports

Mental, physical health, and social services integrated with academics to support student success.

# NYC Community Schools Approach



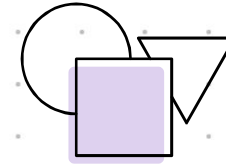


## **Make Supports Proactive**

**Proactive > Reactive**



# Pillar To Practice



## Pillar 2: Integrated Student Supports

- Identify and address students' academic, health, and social-emotional needs
- Use data to proactively offer supports — not just respond to crises
- Coordinate with health clinics, food banks, counselors, and community organizations
- Create a school-based care team that meets regularly
- Make student support visible and accessible (referral forms, posters, QR codes)

## **Turn & Talk:**

List one student support your school currently offers. Is it proactive or reactive?

## **Turn & Talk:**

What integrated practices can best support your students?

# How

Expanded  
Learning Time





After-School

**OST**

Summer

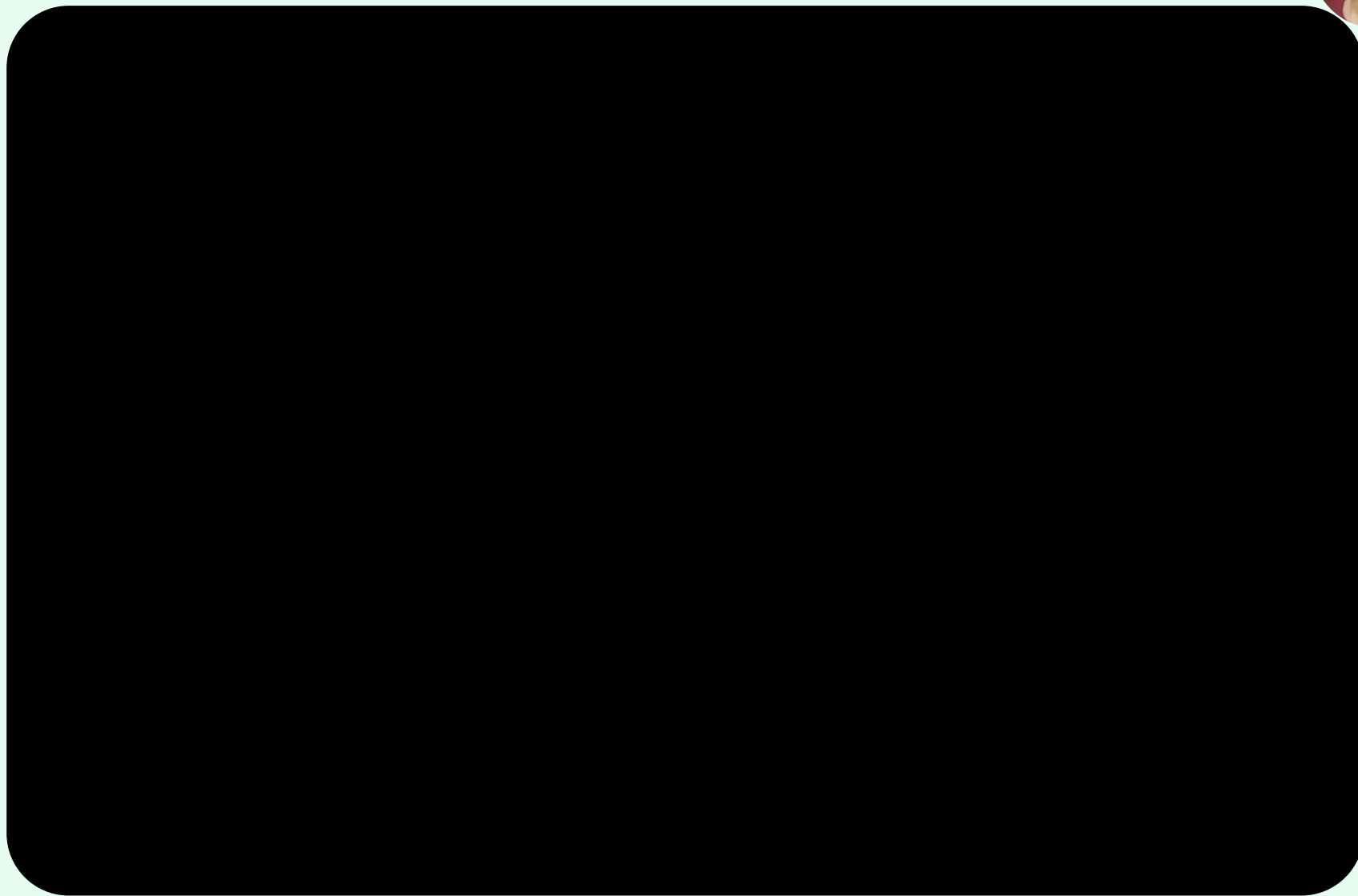
Weekends

# Expanded Learning Time

After-school, weekend,  
and summer programs  
provide academic and  
social, emotional, and  
behavioral support.



# NYC Community Schools Approach





# Make Supports Proactive

Learning doesn't stop **at 3 PM.**



## Step 3:

# Connect to Relationships and Belonging

## Examples

- Sessions starting with connection questions
- CharacterDares used in sports or clubs
- Integrated Social, Emotional and Behavior Lessons

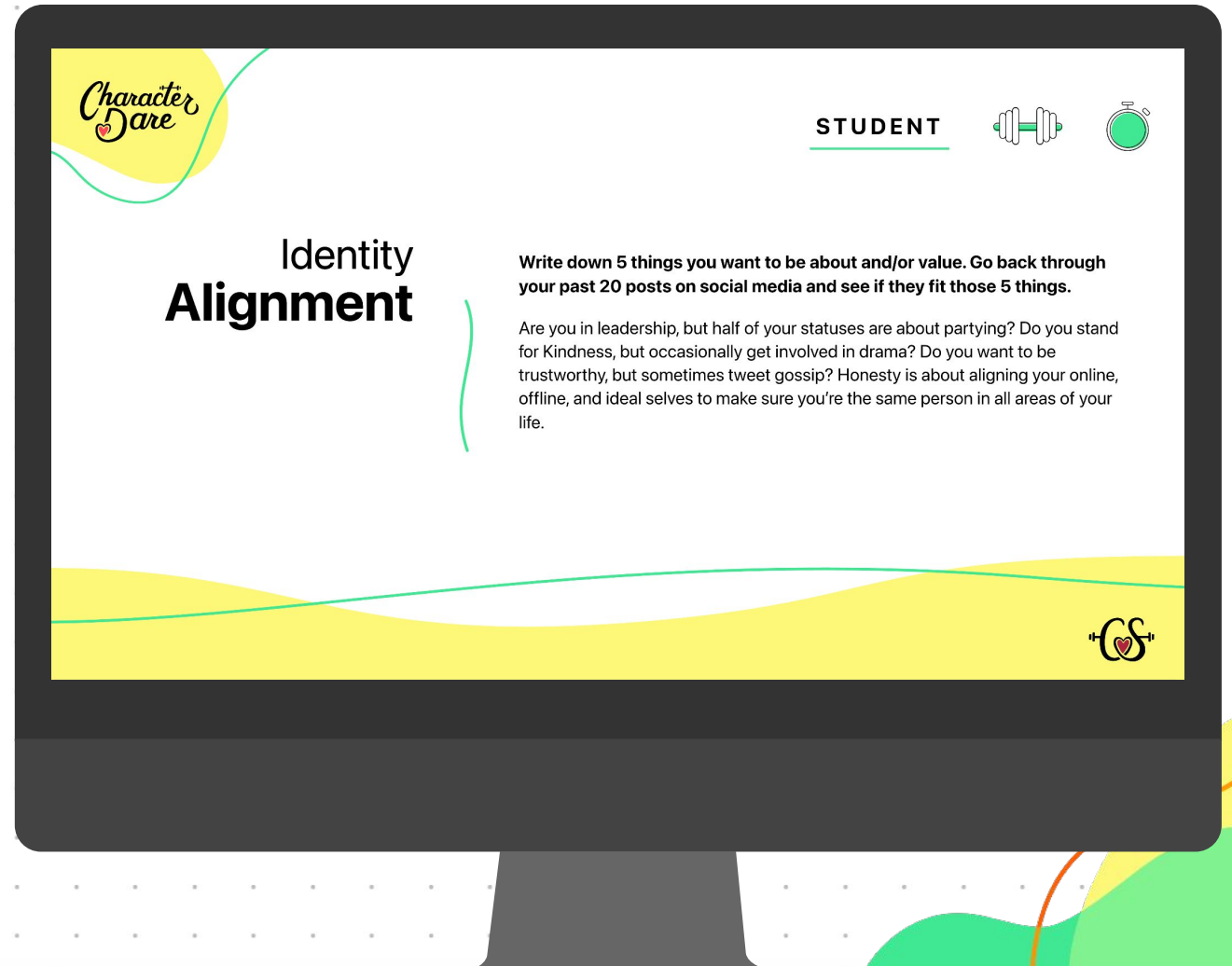




**Effective School Leadership is needed to create a positive culture and climate for the adults to get to outcomes for students.**

### **Schoolwide Resources includes:**

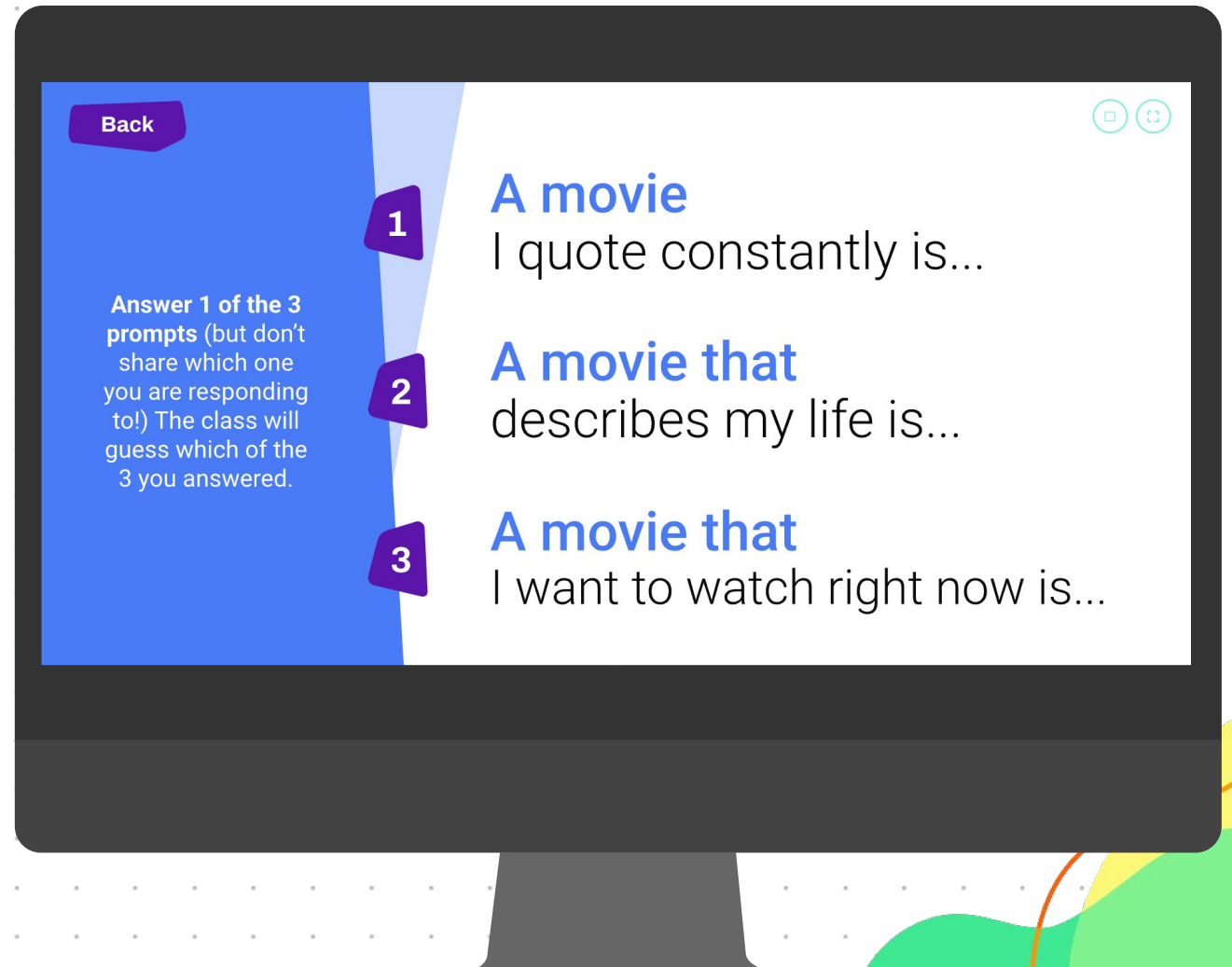
- Staff Pursuits
- Staff Dares
- Student Dares
- Family Dares



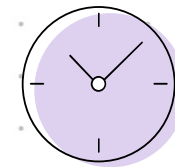
**Educators need to be equipped with low-burden, high impact practices they feel confident and competent to implement.**

**Multi-tiered curricula that includes:**

- LoHi Toolkit
- Relational Strategies
- Community Building Games



# Pillar To Practice



## Pillar 3: Expanded & Enriched Learning Time

- Extend learning beyond the bell – after school, weekends, and summer
- Offer arts, STEM, physical activity, and culturally relevant programming
- Partner with community orgs to provide unique learning experiences
- Use enrichment time to build identity, confident, and curiosity
- Ensure equity of access (free transportation, meals, language access)



## **Turn & Talk:**

Where could social-emotional or relational practices show up outside of the school day?

## **Turn & Talk:**

What enrichment activities have you seen impact student engagement?



# How

Active  
Engagement



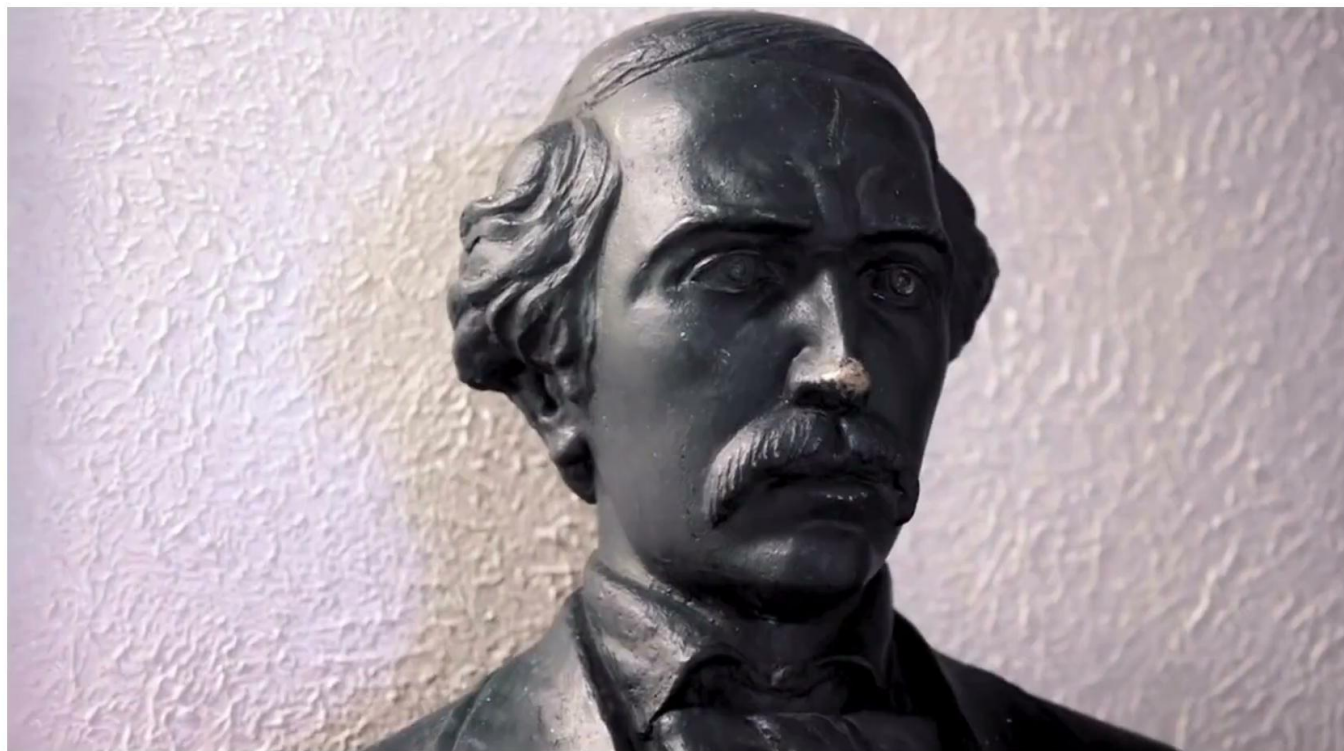


# Family & Community Engagement

Strong partnerships between families, schools, and community organizations to build trust.

**Family as Partner,  
Not Audience**

# NYC Community Schools Approach



## **Make It Two-Way**

Trust is built when we listen,  
not just inform.

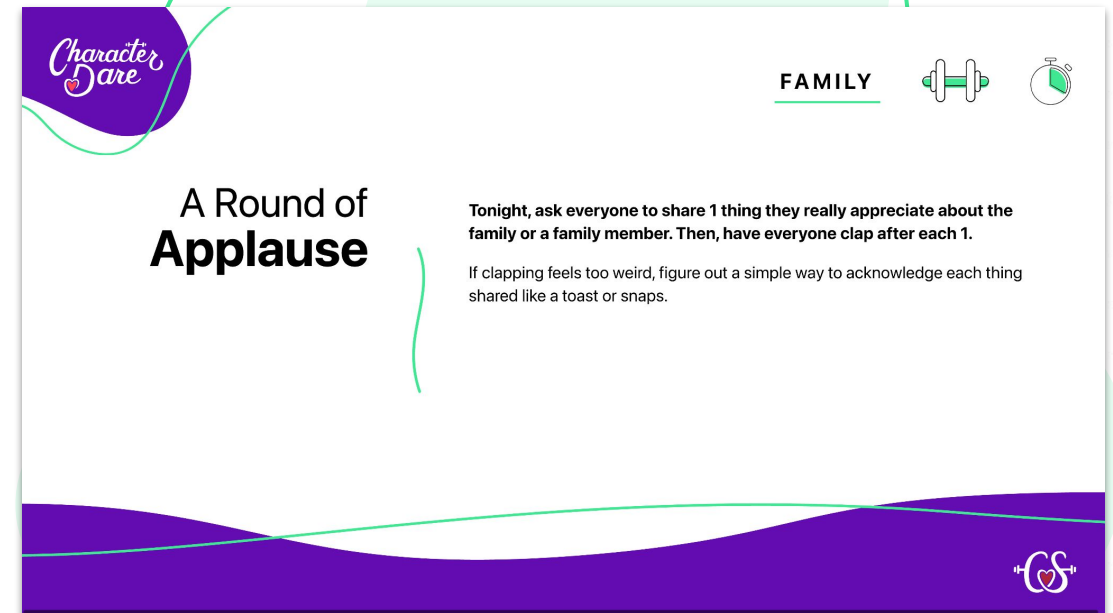


## Step 4:

### Open Spaces for Two-Way Communication

#### Examples:

- FamilyDares
- Family interviews/listening sessions
- Community walks





CharacterStrong provides resources or family to **reinforce life & learning skill-building** for **ALL students at all levels.**

## Family Communication Made Easy

Keep families connected with simple, flexible tools:

- **Start of Year:** Send the *Family Introduction Letter*.
- **After Session 5:** Share the *Character Challenge Letter* and watch this video for tips.
- **Ongoing:** Use 6 easy-to-edit templates to share weekly lesson updates.

[www.characterstrong.com/familystrong](http://www.characterstrong.com/familystrong)





# Pillar To Practice



## Pillar 4: Active Family & Community Engagement

- Invite families as co-creators, not just event attendees
- Use multiple communication methods (texts, WhatsApp, in-person chats)
- Host culturally affirming events co-led by families and students
- Center family voice in decision-making groups and feedback loops
- Build trust through consistent, two-way communication and outreach

## **Turn & Talk:**

Was your last family communication one-way or two-way?

## **Turn & Talk:**

What are creative ways your school/community can engaged families?



Tools and

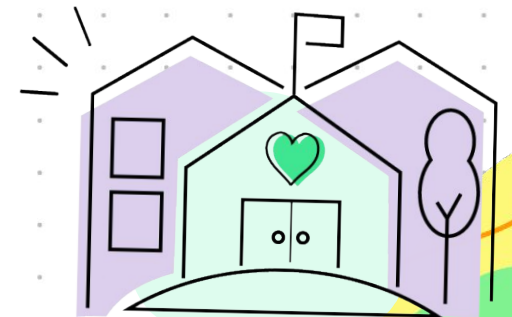
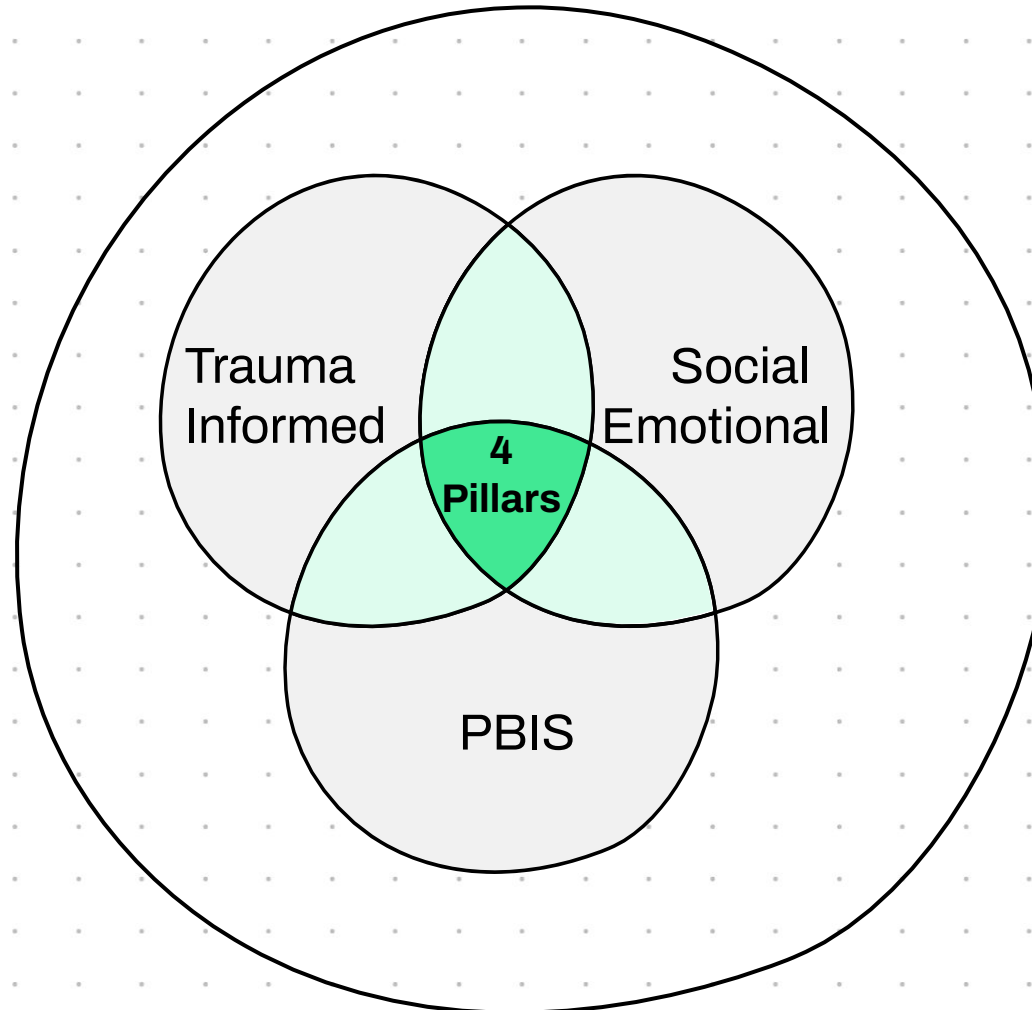
**Next**

**Steps**



# Align **Pillars** With Systems

Pillars succeed when they're embedded in what already exists.



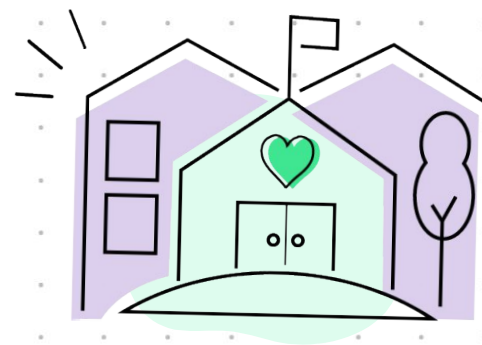
# All Pillars in Action

It's a System—Not a Set of Programs

→ The **four pillars** *work best together*

→ When aligned, they create a web of support that strengthens:

- ☐ Student achievement
- ☐ Family trust
- ☐ Community well-being

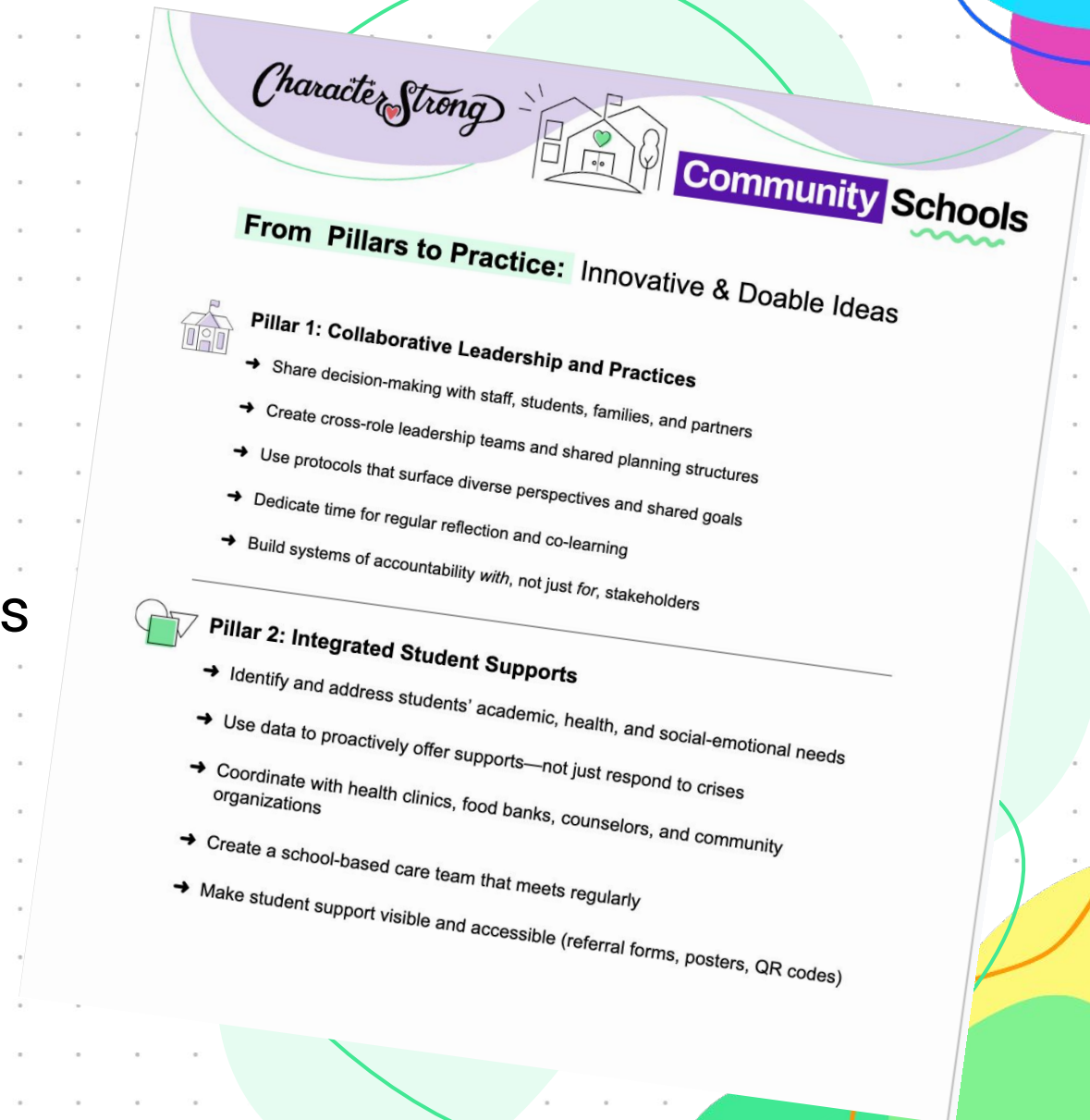




# From Pillars to Practice: Innovative & Doable Ideas

**Pillar 1:** What leadership practices can best support your community school success?

**Pillar 2:** What supports does your community school currently offer or need?

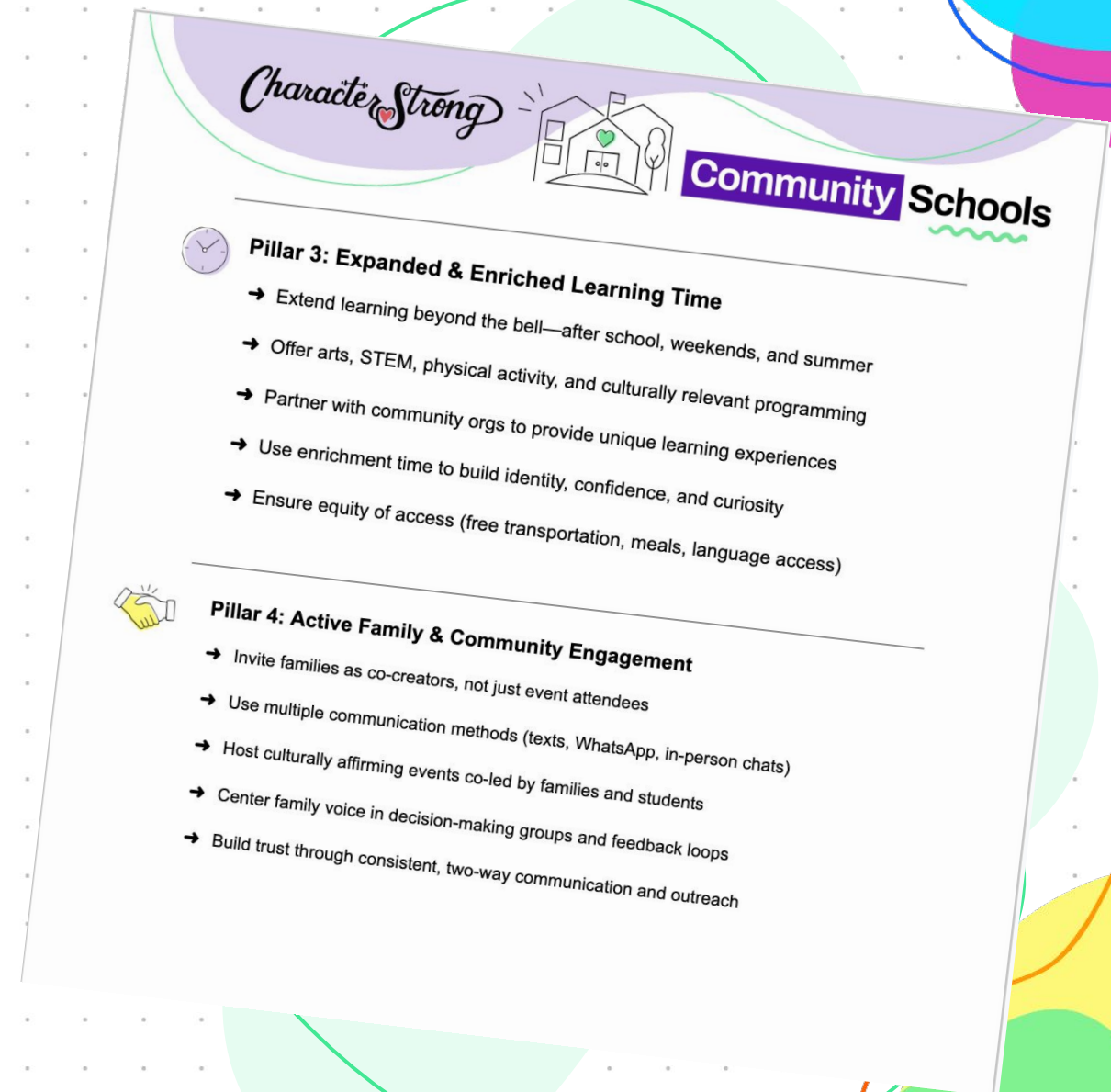




# From Pillars to Practice: Innovative & Doable Ideas

**Pillar 3:** What enrichment activities have you seen impact student engagement?

**Pillar 4:** What are creative ways your school/community can engaged families?



# Pillar-by-Pillar Takeaways

## What to Remember

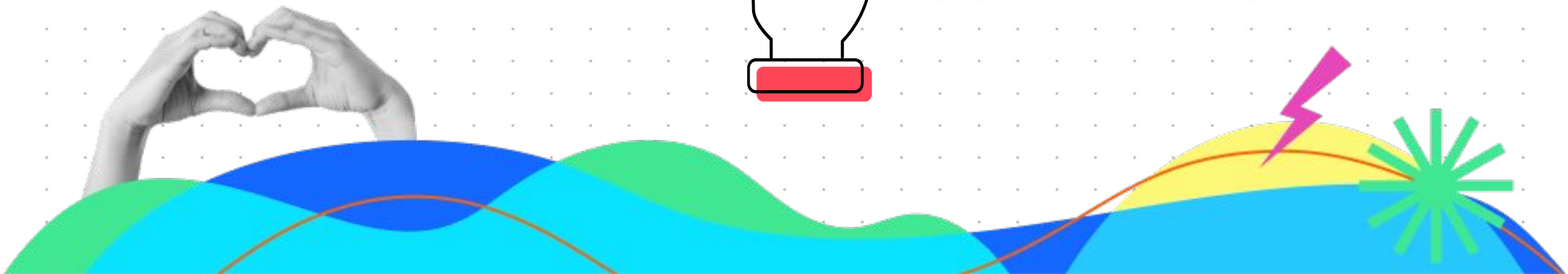
- Integrated Supports → Don't wait for crisis
- Collaborative Leadership → Empower shared ownership
- Expanded Learning Time → Embed SEL beyond the school day
- Family Engagement → Build trust through shared experience





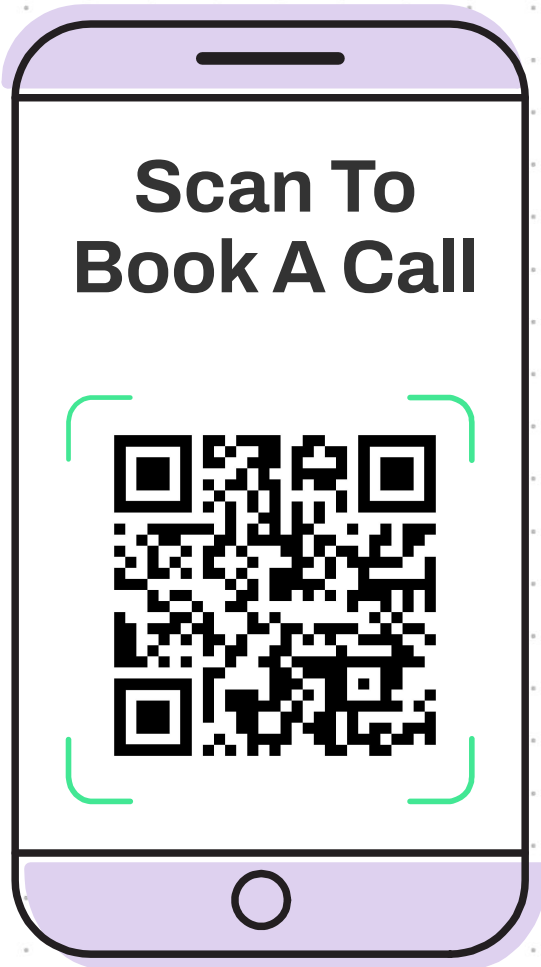


**What's one practice you'll try this  
upcoming school year?**





# Connect on Community Schools



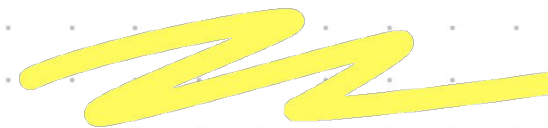
Any other information that might be helpful before the call?

*Community Schools*



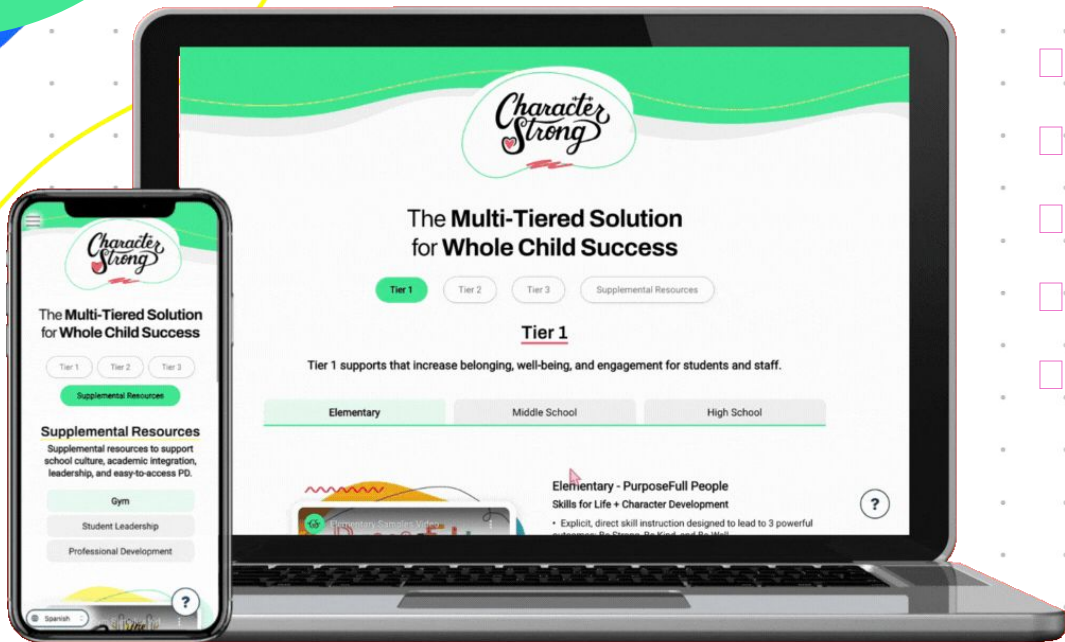


# 60 Second Feedback






# Tier 1 Curriculum



- PreK - 12th Grade Vertically Aligned Curriculum
- Designed by Educators for Educators
- Every lesson is unique and does not repeat
- Research-Based Lessons
- Plug and Play Resources

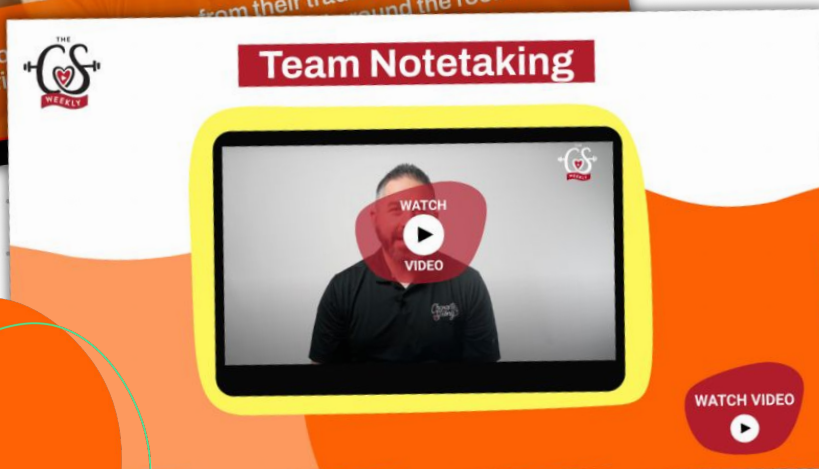
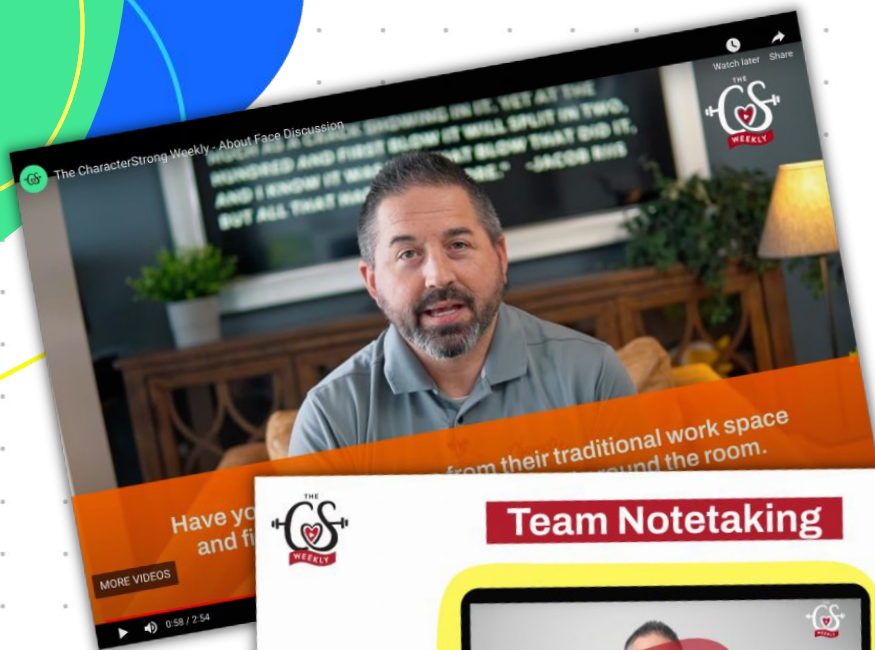
 Scan to  
Learn More



Character  
Strong

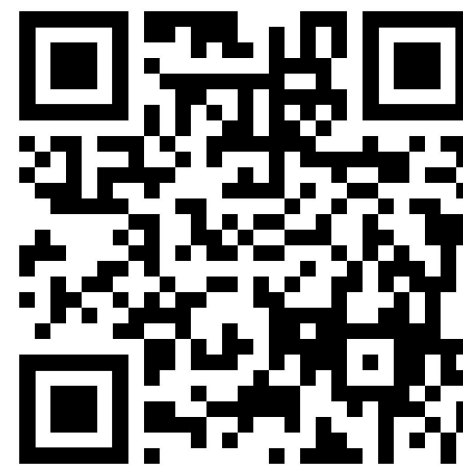
# The CS Weekly

- A quick 2-3 minute strategy
- Delivered every Monday



THE  
Character  
Strong  
WEEKLY

Scan to Sign Up:







*Character Strong*

**MTSS**

**CERTIFICATION**



**September 2025:** Louisville, KY

**October 2025:** Seattle, WA

**October 2025:** New York City

**November 2025:** Austin, TX

**Register now at:**

[CharacterStrong.com/MTSS-Certification](https://CharacterStrong.com/MTSS-Certification)



**Scan Here**